



SCODY

**Product Catalogue**

**Active**

# WHAT DOES SCODY STAND FOR?

SCODY stands for “Sporting Concepts of Distant Years” which embodies our emphasis on research and development and guides us in our pursuit of performance.

Beyond that, SCODY at its core strives to make people happy through exercise.

It is about happiness from being part of something, from belonging, from challenging yourself, from looking good, feeling good and performing at your best.

We work with our sponsored athletes, teams, events and sporting regulators to promote exercise and activity throughout the community.

We supply high-quality performance wear and provide support through our communication channels to encourage activity throughout the broader community.



# AUSTRALIAN MANUFACTURER



We pride ourselves in being one of the few sports clothing manufacturers who still produce clothing in Australia. This allows unparalleled quality, production speed and innovation.

We develop our own patterns based on research and testing and source the best fabrics from all over the world to construct garments with an edge. We don't just put our name on someone else's product.

By creating our own garments we ensure we understand our clothing and are constantly adapting and improving our products based on feedback and testing to ensure our garments help athletes perform at their best.

**SCODY  
PERFORMANCE  
WEAR**

310 MONTAGUE ROAD  
WEST END  
QLD 4101

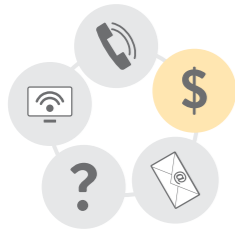
ABN: 66 105 438 113

(07) 31932100  
info@scody.com  
scody.com

/scodyaus  
/scodyaus

# YOUR ORDER PROCESS

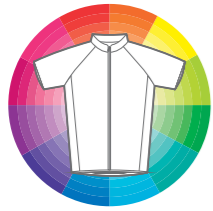
## COMPLETE SERVICE CUSTOM CLOTHING



### GET A QUOTE

Deal with your own allocated Account Manager for assistance with pricing, design, and sizing.

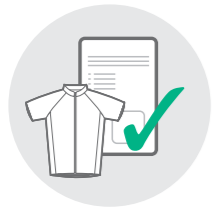
Your account manager will work with you to determine the best garment to suit your needs and provide a free quote.



### DESIGN YOUR ARTWORK

Our design team will help you turn your ideas into fantastic garments that make you and your team look good and feel good.

Your dedicated Account Manager and design team will walk you through the design process to create unique garments that reflect your requirements.



### PLACE YOUR ORDER

When you are happy with your garments, designs, quantity, and sizing, your account manager will place the order for you.

If you're ordering for your team we also have our team Private Shops available where we collate the orders, collect payment and distribute the garments for you.



### PRODUCTION

It takes us up to 6 weeks from order confirmation to produce your high-quality garments.

If you need your order sooner, your Account Manager will work with you to explore express options.



### DELIVERY

We deliver on time, every time and we guarantee our work. We have a number of delivery options including bulk delivery, courier and individual dispatch.

All orders are shipped from our factory in West End and personally checked by our staff for quality.



# ACTIVE

Our range of activewear has been developed for performance, comfort and durability. Utilising world class fabrics and production techniques to ensure you not only look good, but perform better.



## ACTIVE SINGLET



### MRS008 / WRT009

Designed for performance and comfort. Our running singlet has excellent moisture wicking and breathability to help you play at your best.

#### FEATURES

- **UPF 50+**
- Great thermoregulation and antimicrobial properties for to keep wearer cool and fresh.
- Reinforced stitching in pressure areas for increased life of the garment.
- Superior comfort; the ergonomic design allows for freedom of movement.

**SIZING** MEN 2XS - 3XL WOMEN 6 - 18

#### FABRICS

- COOLMAX freshFX

## ACTIVE T-SHIRT



### MRH002 / WRT014

A running shirt for active people - made from moisture wicking COOLMAX freshFX fabric with anti bacterial silver ion technology.

#### FEATURES

- **UPF 50+**
- Great thermoregulation and antimicrobial properties for to keep wearer cool and fresh.
- Reinforced stitching in pressure areas for increased life of the garment.
- Superior comfort; the ergonomic design allows for freedom of movement.

**SIZING** MEN 2XS - 3XL WOMEN 6 - 18

#### FABRICS

- COOLMAX freshFX

## ELITE ACTIVE SINGLET



### WNH009 / GNH003

A super light weight singlet designed for comfort and airflow.

#### FEATURES

- Optimised for activity with minimal seams to minimise chafing.
- Our lightest fabric at only 75 gsm.

**SIZING** WOMEN 6 - 18  
GIRLS 6 - 14

#### FABRICS

- Lite Cool



## ELITE ACTIVE T-SHIRT



### MRH003 / WRT017

A super light weight shirt designed for comfort and airflow.

#### FEATURES

- Optimised for activity with minimal seams to minimise chafing.
- Our lightest fabric at only 75 gsm.

**SIZING** WOMEN 6 - 18  
GIRLS 6 - 14

#### FABRICS

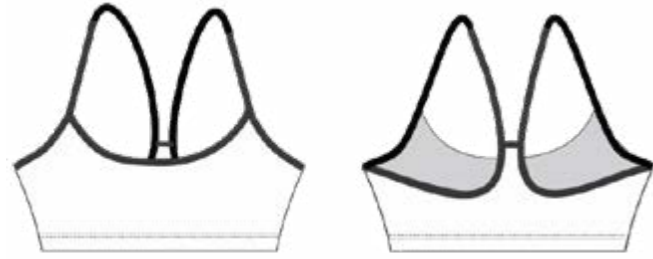
- Lite Cool



## CROP TOP STRAP BACK

### WRT016

Our strap back Women's crop top (unstructured) is lined for extra support and privacy.



#### FEATURES

- **UPF 50+**
- Provides moderate level of support and can be worn as a top or under garment.
- Sanitised antibacterial treatment.
- Good stretch and compression, cooling capabilities within the yarn, and excellent sun protection.
- Lined for extra support and privacy.

**SIZING** WOMEN 6 - 18

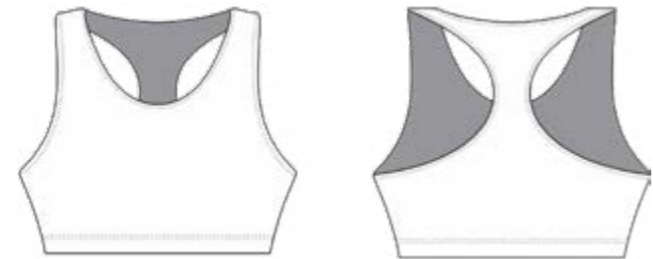
#### FABRICS

- X-Opaque

## CROP TOP RACER BACK

### WRT015

Our racer back Women's crop top (unstructured) is lined for extra support and privacy.



#### FEATURES

- **UPF 50+**
- Provides moderate level of support and can be worn as a top or under garment.
- Sanitised antibacterial treatment.
- Good stretch and compression, cooling capabilities within the yarn, and excellent sun protection.

**SIZING** WOMEN 6 - 18

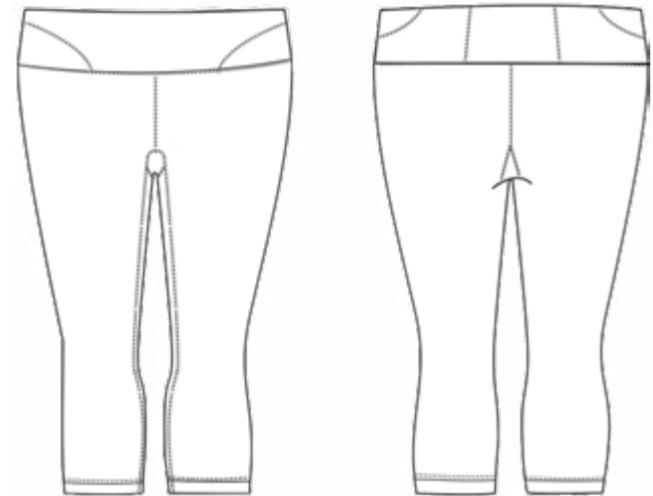
#### FABRICS

- X-Opaque

## ACTIVE TIGHTS 3/4 LENGTH

### WRG019

Featuring a wide waist band and pocket on the back, these 3/4 pants provide a firm and flattering fit. While also provide full thermoregulation which will keep you comfortable while exercising.



#### FEATURES

- **UPF 50+**
- Great thermoregulation and antimicrobial properties for to keep wearer cool and fresh.
- Reinforced stitching in pressure areas for increased life of the garment.
- Superior comfort; the ergonomic design allows for freedom of movement.

**SIZING** WOMEN 6 - 18

#### FABRICS

- X-Opaque

## ACTIVE SHORT

### MRO013 / WRO013

Comfortable running shorts made out of a super light weight moisture wicking microfibre with an inner brief and coin pocket



#### FEATURES

- **UPF 50+**
- Maximum leg movement through curved hem line combined with mechanical stretch in fabric weave.
- Flat seam construction technique used to minimise chafing.
- Super light weight moisture wicking microfibre.
- Comfortable wide waist elastic with draw string for flexibility.

**SIZING** MEN 2XS - 3XL WOMEN 6 - 18

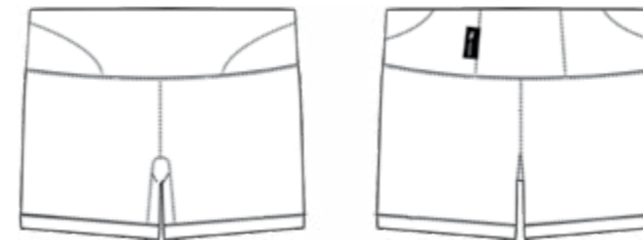
#### FABRICS

- Lite Cool

## ACTIVE PANT

### WRG023

Featuring a wide waist band and pocket on the back, these running pants provide a firm and flattering fit.



#### FEATURES

- **UPF 50+**
- Great thermoregulation and antimicrobial properties for to keep wearer cool and fresh.
- Reinforced stitching in pressure areas for increased life of the garment.
- Superior comfort; the ergonomic design allows for freedom of movement.

**SIZING** WOMEN 6 - 18

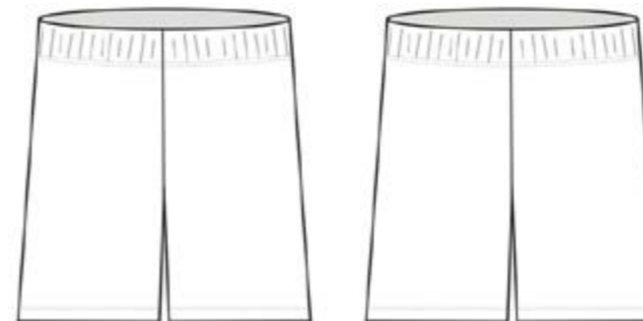
#### FABRICS

- X-Opaque

## MID-LENGTH ACTIVE SHORT

### MRO016 / WRO016

Comfortable mid length active shorts made out of a light weight moisture wicking stretch fabric with side pockets.



#### FEATURES

- **UPF 50+**
- Super light weight moisture wicking microfibre.
- Comfortable wide waist elastic with draw string for flexibility.
- Flat seam construction technique used to minimise chafing.

**SIZING** MEN 2XS - 3XL WOMEN 6 - 18

#### FABRICS

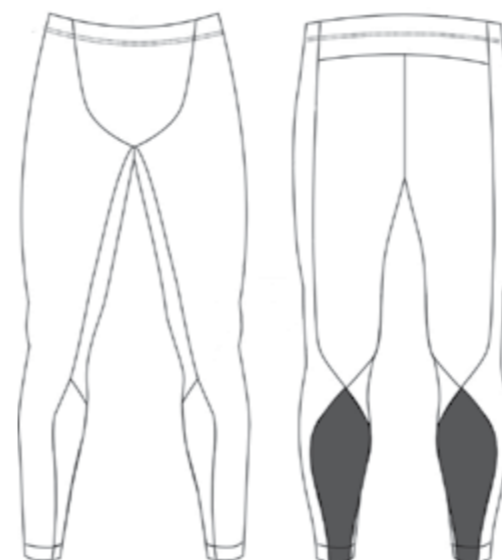
- Lite Cool

# COMPRESSION

Our range of training clothing has been developed for performance, comfort and durability. Utilising world class fabrics and production techniques to ensure you not only look good, but perform better.



## FULL LENGTH COMPRESSION PANT



### MRG005 / WRG005

Designed to provide maximum support during activity and to aid muscle recovery after activity. While providing optimal moisture management, thermoregulation and comfort during and after exercise

#### FEATURES

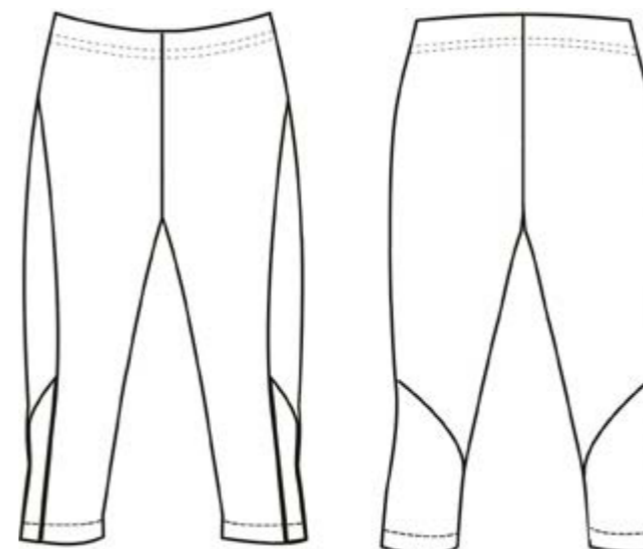
- **UPF 50+**
- Great thermoregulation and antimicrobial properties for to keep wearer cool and fresh.
- Reinforced stitching in pressure areas for increased life of the garment.
- Superior comfort; the ergonomic design allows for freedom of movement.

**SIZING** MEN 2XS - 3XL WOMEN 6 - 18

#### FABRICS

- Pro-Hydra Dura

## 3/4 LENGTH COMPRESSION PANT



### WRG016

Designed to provide maximum support during activity and to aid muscle recovery after activity. While providing optimal moisture management, thermoregulation and comfort during and after exercise

#### FEATURES

- **UPF 50+**
- Great thermoregulation and antimicrobial properties for to keep wearer cool and fresh.
- Reinforced stitching in pressure areas for increased life of the garment.
- Superior comfort; the ergonomic design allows for freedom of movement.

**SIZING** WOMEN 6 - 18

#### FABRICS

- Pro-Hydra Dura

## COMPRESSION SHORT



### MRG006 / WRG007

Designed to provide maximum support during activity and to aid muscle recovery after activity. While providing optimal moisture management, thermoregulation and comfort during and after exercise

#### FEATURES

- **UPF 50+**
- Great thermoregulation and antimicrobial properties for to keep wearer cool and fresh.
- Reinforced stitching in pressure areas for increased life of the garment.
- Superior comfort; the ergonomic design allows for freedom of movement.

**SIZING** MEN 2XS - 3XL WOMEN 6 - 18

#### FABRICS

- Pro-Hydra Dura

# ACCESSORIES

## HEADWEAR



### RUNNING CAP BHAT

SIZING ONE SIZE

#### FEATURES

- Heavy brushed cotton
- Structured 6 panel design
- Pro-stitch feature on peak
- Pre-curved peak
- Embroidered eyelets
- Padded cotton sweatband



### RUNNING VISOR BHAT

SIZING ONE SIZE

#### FEATURES

- Premium American Twill fabric
- Structured 6 panel design
- Flat peak
- Embroidered eyelets
- Padded cotton sweatband



### TRUCKER HAT BHAT

SIZING ONE SIZE

#### FEATURES

- UPF rating 50+
- Meets Australian Standards AS/NZS 4399
- 6.5cm brim
- Double fabric crown
- Embroidered eyelets



### BEANIE BHAT

SIZING ONE SIZE

#### FEATURES

- Knitted acrylic
- Roll up cuff

# ACCESSORIES



### BACKPACK BBAG

SIZING ONE SIZE

#### FEATURES

- Compression straps
- Reflective piping for safety
- Padded back and shoulder straps
- Large front zippered pocket
- 2 mesh side pockets
- Moulded plastic handle



### GEAR BAG BBAG

SIZING ONE SIZE

#### FEATURES

- Double zippered main compartment
- Zippered pocket at one end and shoe tunnel at the other
- Rubber feet on base



### WATER BOTTLE BBOT

SIZING ONE SIZE

#### FEATURES

- Low density soft-feel premium PVC
- Fluid viewing measurement
- Bottles with screw lids
- Volume size: 750ml



### GEAR SACK BBAG

SIZING ONE SIZE

#### FEATURES

- Draw cords for use as over shoulder or backpack style carrying
- Front zippered storage pocket
- Reinforced eyelets at base
- Black back panel

# SIZE CHARTS

## MENS

	CHEST	WAIST	HIP	HEIGHT
<b>3XS</b>	77-82	62-67	79-84	158-172
<b>2XS</b>	82-87	67-72	84-89	162-176
<b>XS</b>	87-92	72-77	89-94	167-185
<b>S</b>	92-97	77-82	94-99	170-187
<b>M</b>	97-102	82-87	99-104	172-188
<b>L</b>	102-107	87-92	104-109	174-190
<b>XL</b>	107-114	92-99	109-116	174-192
<b>2XL</b>	114-121	99-106	116-123	176-194
<b>3XL</b>	121-128	106-113	123-130	176-196

## WOMENS

	CHEST	WAIST	HIP	HEIGHT
<b>6</b>	77-82	62-67	79-84	150-168
<b>8</b>	82-87	67-72	84-89	155-173
<b>10</b>	87-92	72-77	89-94	158-179
<b>12</b>	92-97	77-82	94-99	160-179
<b>14</b>	97-102	82-87	99-104	163-182
<b>16</b>	102-107	87-92	104-109	166-185
<b>18</b>	107-112	92-97	109-114	168-187

## JUNIORS

	CHEST	WAIST	HIP	HEIGHT
<b>6</b>	64-68	56-60	66-70	120-132
<b>8</b>	68-72	60-64	70-74	132-144
<b>10</b>	72-76	64-70	74-78	144-150
<b>12</b>	76-80	70-73	78-82	150-160
<b>14</b>	80	73	82	160







310 Montague Road,  
West End, QLD, 4101  
ABN 66 105 438 113

(07) 3193-2100  
info@scody.com  
scody.com